

Ron Stocke

AUTUMN 2025 PRESENTER



OCTOBER 28, 2025

General Meeting Demonstration

MEETING START TIME:

6:00 p.m. (Pacific time)

Born in 1966 in Chico, California, Ron Stocke is an acclaimed watercolor artist whose work is celebrated for its bold composition, masterful use of light, and expressive brushwork. Now based in the Pacific Northwest, Ron has cultivated a lifelong connection to watercolor—an art form he first encountered in grade school and describes as “honest, challenging, and always new.”

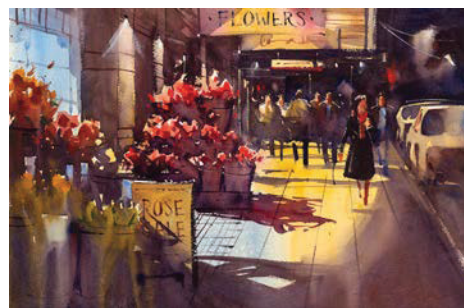
Ron’s paintings capture a dynamic range of subjects, from bustling urban streets and quiet interior spaces to expansive landscapes and coastal scenes. His unique approach blends control with spontaneity, creating pieces that are both technically refined and emotionally resonant. Known for infusing his work with clarity and energy, he brings a fresh perspective to contemporary watercolor.

A highly sought-after instructor, Ron teaches workshops throughout North America and internationally, as well as online. His teaching style emphasizes strong technique, creative interpretation, and environmentally responsible studio practices. He regularly shares his insights in top-tier art publications,

including *Watercolor Artist*, *The Artist’s Magazine*, and *Plein Air Magazine*, where he has been featured on the cover.

Ron holds signature memberships in the American Watercolor Society, National Watercolor Society, and Northwest Watercolor Society. He is also an elected member of the Canadian Society of Painters in Watercolour, and a member of the American Impressionist Society. For over 15 years, he has proudly served as an artist ambassador for M. Graham Watercolors.

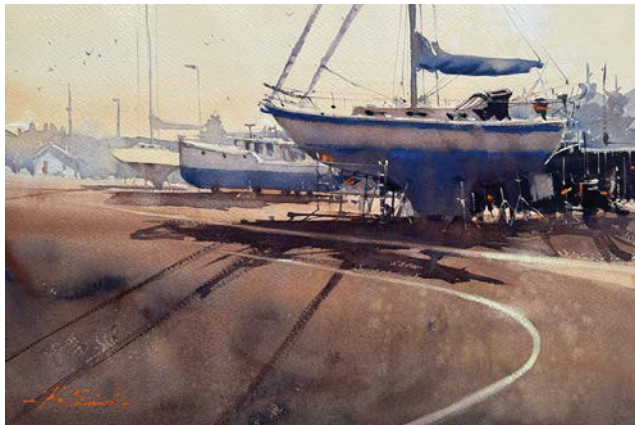
In 2018, Ron released his first book, *En Plein Air: Watercolor*, a practical guide for artists looking to take their watercolor practice outdoors.



This book offers step-by-step techniques for painting on location, covering everything from choosing a subject and packing efficiently to working with changing light and completing dynamic plein air compositions.

Through both painting and teaching, Ron continues to explore the expressive potential of watercolor. His passion for the medium is evident in every brushstroke—and in the countless students and collectors his work inspires.

For more information:
visit www.ronstocke.com





The Northwest Watercolor Society Newsletter

P.O. Box 50387
Bellevue, WA 98015-0387
www.nwws.org

ACTING PRESIDENT

Deborah Roskopf
president.nwws@nwws.org

ACTING VICE PRESIDENT

Molly Murrah
nwws.host@nwws.org

CORRESPONDING SECRETARY

Conny Spann
correspondingsec@nwws.org

RECORDING SECRETARY

Peggy Willett
secretary@nwws.org

TREASURER

Shirley Jordan
shirleylee136@hotmail.com

ATTORNEY

Jane Prymak
Fox Rothschild LLP
jprymak@foxrothchild.com

NEWSLETTER EDITOR

D'Arcy Heiber
newsletter@nwws.org

NEWSLETTER DEADLINES

December 1 for Winter issue
March 1 for Spring issue
June 1 for Summer issue
September 1 for Autumn issue

Email your items to:
newsletter@nwws.org
(Subject line: NWWWS Hot Press)

PAYMENTS & FINANCIAL INQUIRIES

Treasurer, Shirley Jordan
shirleylee136@hotmail.com

HOT PRESS EDITOR



Editor's Marks

by D'Arcy Heiber

What did you do on your summer vacation?

Did you even take a vacation? I hope, regardless of your employment or retirement status, that you've been able to take some time to "smell the roses," and better yet, *paint* the roses, or any of the other colorful wonders of summertime. I've enjoyed the long hours of light, smokey red sunsets, and lazy afternoons sipping iced coffee on the deck. Now, my thoughts are turning to the gentler temperatures of autumn. I'm eager to see my gardens' palette turn to brilliant hues. But—with fall comes less sunshine and shorter daylight hours every day, until the Northwest sinks into the Big Dark. I know that Nature needs her sleep, and my gardens need time to rest and regenerate. Fall and winter's short, dreary days will be filled with plans for spring, holidays, and ideally, lots of painting and creativity. I hope you find some colorful autumn energy to inspire you until the light starts growing again.

In this issue, you'll find information about NWWWS's Waterworks Members Exhibition, upcoming meetings and demo artists, and a pageful of incredible landscapes by our members. Plus, Haidyn Palanchar takes us on a whirlwind 17-day European tour of art stores, supply factories, and museums. Pack light and enjoy!

Autumn Hot Press Index

President's Message – 3

In Memory of Ann Breckon – 6

Kudos Signature Members – 6

Exploring Art Supply Stores
and Factories in Europe – 8

Hot Press Gallery – 14

Plein Air Show to Come – 16

**HOT PRESS
SUBMISSION DUE DATES**

WINTER DEADLINE

DECEMBER 1

January/February/March Issue

SPRING DEADLINE

MARCH 1

April/May/June Issue

SUMMER DEADLINE

JUNE 1

July/August/September Issue

AUTUMN DEADLINE

SEPTEMBER 1

October/November/December Issue



We often receive such lovely notes from our members. Sometimes it is a simple “thank you for all you do” at the end of an inquiry with a different purpose. Other times, someone takes a few minutes to express appreciation for something specific, possibly a workshop they’ve taken or a demo that was especially valuable to them. We do kinda melt when you think of us and take time to write. And we share them with one another.

Many of you have volunteered for organizations and enjoy doing so, not expecting fan mail. We are the same way. Our board is quite stable because we all feel rewarded by our contributions. When your emails or snail-mail notes arrive, it is feedback that tells us we’re doing what needs to be done for your benefit and artistic growth. Occasionally, we receive a frown-faced “suggestion,” but it is rare. That’s feedback, too. We appreciate constructive criticism and will address your concerns.

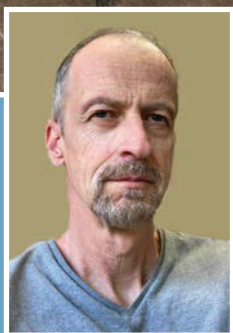
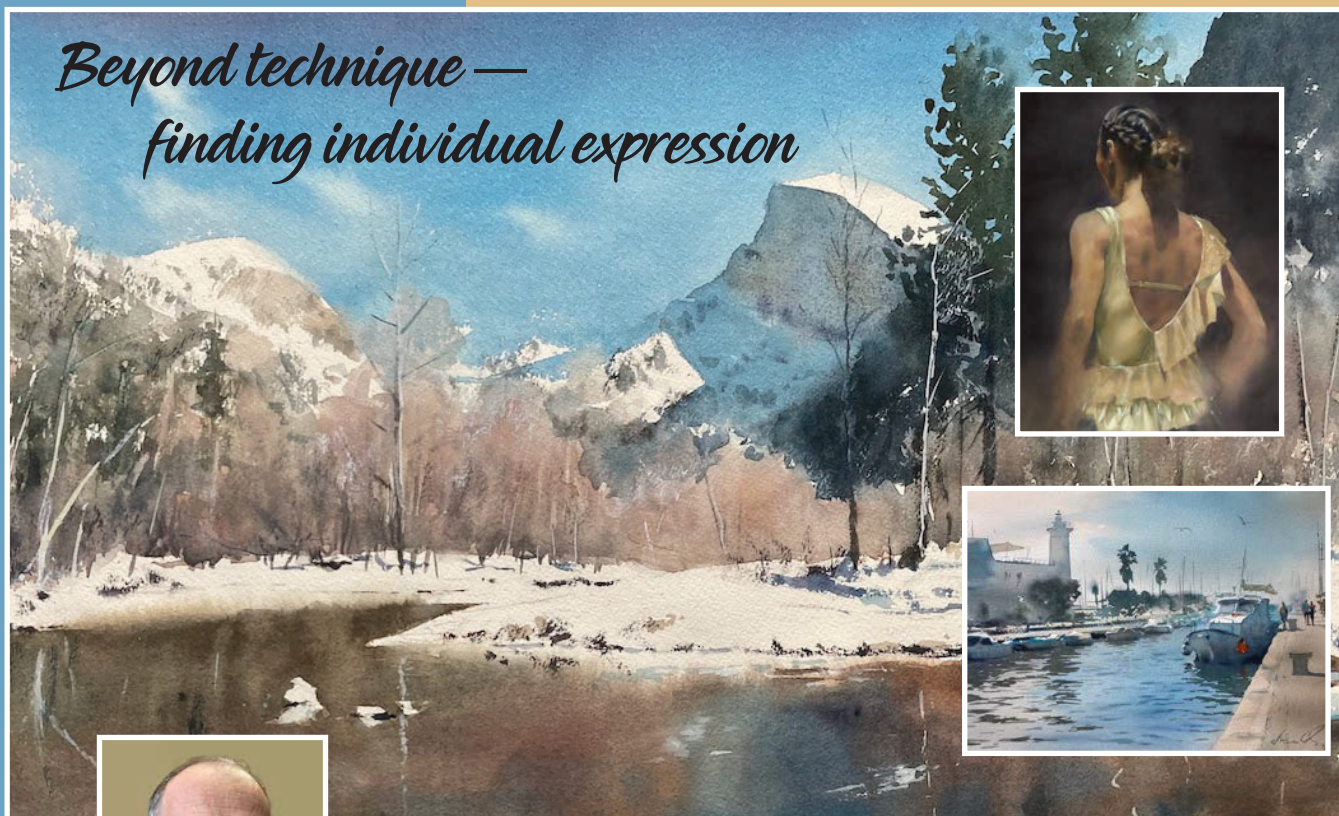
We have almost a thousand NWWS members across the U.S. and around the world. Just under half of our members live outside Washington state and internationally. Hearing from new members living far away or long-time members with local addresses will always be special and very much appreciated. We thank you for your kind thoughts and enthusiastic support. Keep the cards and letters coming!

Deborah Roskopf, NWWS Acting President

Important Notice

On another note, NWWS has received word from the Washington State Department of Revenue that, beginning October 1, both our online multi-day workshops and our *Workshops International* workshops are considered retail sales, and we are obligated to charge sales tax. **This applies only to residents of Washington State.** We don’t want to surprise you when the form includes sales tax.

*Beyond technique —
finding individual expression*



NWWS THREE-DAY ONLINE WORKSHOP

with Frank Eber
AIS, AWS, NWS

October 20 – 22, 2025
9 a.m. to 4 p.m. PDT

REGISTRATION
IS NOW
OPEN AT

www.nwws.org

Learn how to paint luminous watercolors by manipulating tonal values, color, and edges. Frank will share advanced painting techniques to create atmosphere, balance, and unity in your work. The techniques you will learn in Frank's workshop transcend the watercolor medium.

WORKSHOP TOPICS

- Control of values and color temperature
- Composition
- Atmospheric perspective
- Paint application methods
- Finding one's own creativity

CONTACT INFORMATION www.frankeber.com

LIMITED TO 22 PARTICIPANTS

REGISTRATION FEE

\$325 – NWWS Members

\$400 – Non-members

If you are a non-member, join *before* registering and save \$75 on the workshop fee.

CANCELLATION POLICY

There is a cancellation fee of \$50. If you cancel before October 1, you will receive a full refund minus the \$50 cancellation fee. If you cancel

on or after October 1, the refund will be half of the workshop fee minus the \$50 cancellation fee.



FOR MORE INFORMATION

workshops@nwws.org

www.nwws.org

P.O. Box 50837

Bellevue, WA 98015

Carla O'Connor

AWS-DF, NWS-M, NWS-GMF, AWA



BIG

ESTATE | STUDIO SALE

PAINTINGS - BOOKS - GIFTS
SUPPLIES - DEALS GALORE
AMAZING PRICES!

SAT. OCT. 4 - 9:00 - 5:00

art@carlaconnor.com 253-509-9148

6082 SE BOCELLI WAY, OLALLA, WA 98359

• **CASH OR CHECKS ONLY** •

PAINT WITH THE BEST

Master your medium with rich,
lightfast colors from all the
top brands.



Shop in stores and online.

BLICK
art materials

DickBlick.com 800.828.4548

© Copyright 1999 - 2025 Blick Art Materials, LLC. All Rights Reserved.

Dr. Ph. Martin's®

SINCE 1934

- WATERCOLOR
- INDIA INK
- LIQUID ACRYLIC
- CALLIGRAPHY COLOR

**THE MOST BRILLIANT
LIQUID COLOR
PRODUCTS**

MADE { **IN SMALL BATCHES
BY HAND
IN THE UNITED STATES**

WWW.DOCMARTINS.COM

**DR. PH. MARTIN'S® PRODUCTS ARE
WATER-BASED AND DESIGNED FOR
USE ON PAPER, CANVAS, AND OTHER
ART MEDIUMS. ALL DR. PH. MARTIN'S®
PRODUCTS ARE MANUFACTURED
BY SALIS INTERNATIONAL, INC.**



In Memory of Ann Breckon

by Charlene Burley

Ann Breckon will be remembered by so many of her fellow artists and students, and there were a lot! As a former student, I can confirm her strong commitment to our success as artists. Her classes were varied as to subjects (she could paint anything) and full of helpful lessons on color, value, and composition. She had a way of stepping us through the projects, making even the complex seem simple. She always greeted us warmly and was kind in her critiques, helping us grow. Her students knew if they messed up, she was there with a smile to help them fix it. All was not lost. To Ann, art was meant to inspire and nourish the soul.

Another passion of Ann's was her work with the Northwest Watercolor Foundation. Every year, she reached out to many colleges and universities across the northwest to spread the word and coax art professors to help the foundation give away the annual scholarships. Once the invitations were sent, she anxiously waited to see what new and exciting work would flow in through emails. Judging was often difficult, as there were many great pieces. Once selected, she was eager to notify the lucky winners. She especially loved adding several honorable mention winners to show we saw them and recognized them, too.

I know Ann would love a scholarship fund to be set up in her memory, to be paid out each year to the honorable-mention winners. Anyone wishing to contribute to this cause may do so by writing a check payable to the Northwest Watercolor Foundation. Note "In Ann's memory" in the "for" section. The NWWF is a 501(c)(3) organization.

Northwest Watercolor Foundation
C/O Charlene Burley
13530 SE 268th Street, Kent, WA 98042

Ann always put her whole heart into everything she did and encouraged us to do the same. She touched so many lives with her generous spirit. Her gift of art will live on through those of us who knew her. She will be missed.

FREE

EASTSIDE ART STUDIOS

*Paint and meet with other artists.
 Bring your own materials.*

EVERY TUESDAY

South Bellevue Community Center
 14509 SE Newport Way, Bellevue, WA
 425-452-4240/bellevuewa.gov

EVERY TUESDAY

Crossroad Community Center
 16000 NE 10th St, Bellevue, WA 98008
 425-452-4874

EVERY FRIDAY

North Bellevue Senior Center
 4663 148th Ave NE, Bellevue, WA 98007
 415-452-7681

ONCE A MONTH

Mercer Island Community Center
 8236 SE 24th St, Mercer Island, WA 98040
 206-275-7609

Kudos

CONGRATULATIONS

to four artists who have earned
 NWWF Signature Membership!

Gary Friedman

of Valencia, California

Jan Min

of Blaricum, Netherlands

Rose West

of Portland, Oregon

Nancy Grigsby

of Blaine, Washington

DANIEL SMITH



NEW!
5ml Watercolor
Triads: Eight
Carefully
Curated Sets
for Endless
Inspiration!



Stormbreaker
 Bloodstone Genuine • Iridescent
 Electric Blue • Prussian Blue

Architectural
 Buff Titanium • Lavender • Sepia

Evening Glow
 New Gamboge • Manganese Blue Hue •
 Shadow Violet

Desert Horizons
 New Gamboge • Manganese Blue Hue •
 Shadow Violet

Spring
 Hansa Yellow Light • Opera Pink •
 Cobalt Teal Blue

Summer
 Ultramarine Rose • Ultramarine
 Turquoise • Naples Yellow

Autumn
 Aussie Red Gold • Rose of Ultramarine
 • Undersea Green

Winter
 Lunar Black • French Ultramarine Blue
 • Cascade Green



Learn more

Ready-to-Go Sets Offering Inspiration and Value



All Half Pan Sets

Learn more

Watercolor Mixing Sets



Learn more



Watercolor Essentials Set



Watercolor Primatek Set

- BONUS Free Tube



Essential Watercolor Mixing Set

Mineral Watercolor Mixing Set

- BONUS FREE Case and
 Watercolor Ground

Watercolor Stick Sets of 5

-BONUS
 Free Stick and Case



Learn more

15ml Primary and Secondary Sets



Learn more



15ml Primary Watercolor Mixing Set



15ml Secondary Watercolor Mixing Set

-BONUS Free Case



15ml Primary Watercolor Set

15ml Secondary Watercolor Set

-Buy 2, Get 1 Free Pricing



@danielsmithartistsmaterials

**ZOOM WITH US LIVE EACH WEEK SO YOU CAN SPEAK
 DIRECTLY WITH JOHN AND ENGAGE WITH FELLOW
 ARTISTS! VISIT DANIELSMITH.COM FOR DETAILS.**

DANIEL SMITH





Exploring Art Supply Stores and Factories in Europe

by Haidyn Palanchar



Sketching on the train

This spring I had the opportunity to take a trip that fueled my artist's soul. Rewind back to 2020, when artists flocked to the internet to live stream. During lockdown, some baked, some walked endless miles on safe streets, some remodeled their homes, and others, like me, focused on developing skills of their favorite hobby. I lost myself in art, watching tutorials, trying out new supplies, and making friends all around the world in private art groups. Fast-forward five years, and I still spend most Sunday mornings online with my friends, creating and chatting.

After years of meeting online, we decided to meet in person, so my husband and I planned a trip to visit

five countries with a Google list of over 30 art stores, factories, and museums, *and* an in-person meet-up with my online friends. We had 17 days to experience it all.

Our first stop was Amsterdam for a 27-hour layover. Amsterdam is a beautiful city where you can lose track of time as you wander through the streets and along the canals while finding delicious coffee and pommes frites. Brouwerij 't IJ, a brewery, is an institution in an old windmill that is great for sketching. On Sunday nights, Mulligan's Irish Music Bar hosts an open Irish music jam session, which is a fantastic evening of creativity. Van der Lind & Van der Beek Art Supplies were lovely

shops. If I'd had another day, I would have traveled an hour east to the Royal Talon's Experience Center.

Next stop was Scotland, where we scheduled three nights in Edinburgh, with a day trip to Glasgow. Edinburgh is a gorgeous city with its hillside castle views and its stunning architecture that seamlessly intertwines with nature. A hike up [Arthur's Seat](#) is never a bad way to spend an afternoon. The Royal Mile Shops are fun to walk along, but the real charm is in the streets beyond this famous thoroughfare. Among the six shops I visited, Greyfriars Art, founded in 1840, and Edinburgh Art Shop were my favorites. Greyfriars Art suggested a visit over toward the

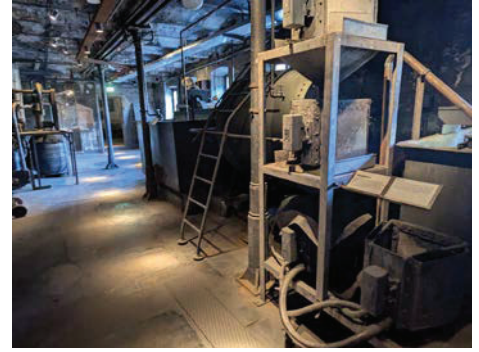
Continued on page 9 —

TALES & ADVENTURES

Continued from page 8 —



Top Left: Faber Castell Werks, **Top Right:** Faber Castell Museum interior, **Center Right:** Faber Castell Werks gate, **Lower Right:** Faber Castell Museum ceiling



Royal Botanic Gardens to Henderson Art Shop, and a visit to its unique street known for its thrift shops.

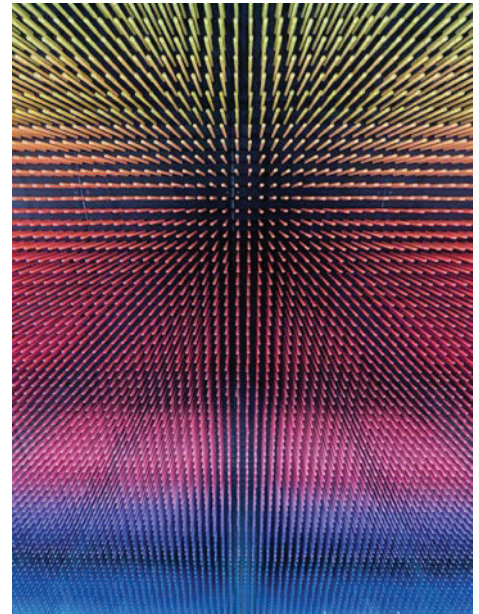
The highlight in Glasglow was DRAW Art Store, a unique and charming shop with a friendly owner who will let you try almost anything in the shop before buying. The neighborhood around DRAW is well worth a visit. Miller's Art Shop in Glasglow is the sister store to Greyfriars in Edinburgh. Before leaving Edinburgh, we picked up a rental car for our drive down to England, but not without a stop at the [Falkirk Wheel](#) to see a work of engineering greatness.

Our road trip through England was mapped so I could visit as many art spots as possible on the way to Market Harborough, where I would meet my friends.

We made our way down to the Lakes District for a stop in Keswick at the Derwent Pencil Museum and spent the night at Keswick Country House Hotel in the old train depot. A visit to Derwent includes a trivia checklist as you make your way through the

museum for a gift at the end. It's situated next to Derwent's original Cumberland factory, which is no longer in use. The local pub, Dog & Gun, is famous for its goulash and is full of dogs if you're missing your furry friend at home.

Next up was a drive through the Lakes District National Park on our way to Horwich for a stop at Bromley's. Bromley's is primarily an online shop but has a lovely little store front. The staff were keen to share supplies we might not find in the US, and after seeing my interest in these new supplies and my quest for Schmincke Super Granulating paints, I was invited back into the warehouse to shop. It was my version of Willy Wonka's Chocolate Factory! Staff at Bromley's highly recommended lunch at The Great House Barn, which was delicious, and in a picturesque setting outside of town. I wanted to visit Rosemary & Co. Brushes next, but a call-ahead confirmed they were not open to public. They will be opening a Carriage House Airbnb on the family's property, along with a shop open to the public soon.



On the first Saturday in April 2025, I spent a lovely weekend in the small town of Market Harborough, England, meeting many of the women I've spent so much time with these last few years. We represented six countries. We are already planning another weekend together for 2026.

I added the next stop in Germany to the itinerary when I realized the Faber

Continued on page 10 —

TALES & ADVENTURES

Continued from page 9 —



Sketching in Prague

Castell factory was only a three-hour drive from Prague, the final stop on our trip. We flew to Nuremberg in Bavaria, where I would love to return and spend more time. It's a beautiful city that is extremely walkable, with nice public transportation options. Reservations are needed for all visits to Faber Castell, and tours in English are extremely limited. We booked a tour in German and were not disappointed with our experience. On the first day, we booked a ticket for lunch at the Castle. On our second day, we booked a tour of the original graphite factory, which was a treasure, to see how it all began. We continued right into a tour of the current pencil factory, where we saw their modern operation. Seeing thousands of colored pencils being created all at once was a dream, but sadly, no pictures are allowed in this factory. Tours end at the visitor centre and shop, where you can try out and make purchases from their full product range. A tour ticket gives you 20% off the already discounted factory prices.

Our final stop was Prague, and I must admit, I was impressed by Prague. I walked around thinking I was in a fairy tale city—the building facades were whimsical and pristine. The public transportation was possibly the best we've experienced around the world. A 30-day pass was about \$35. Koh-I-Noor is from the Czech Republic and had countless store

fronts around Prague. Many small art shops can be found around the city, with a vastly different inventory than I found in the UK. I bookmarked at least 11 shops, but there were so many, I just wandered in when we happened upon them. My favorite shops were Zlara Lod Art Supplies and Pstross Vytvarne Potreby Art Supplies.

With six days in Prague, I reached out to the local Urban Sketchers and joined them for a meetup. Their sketching spot was at a public library during a wedding, a unique experience to share. Prague was a wonderful city for urban sketching, and I loved spending afternoons sketching bridges. Not to miss is a walk over to the Prague Astronomical Clock, where we found a massive Easter Market. Prague is known for cafeteria-style restaurants where rotating traditional meals are served up daily. These restaurants are filled with locals having inexpensive lunches. U Fleku is a fun restaurant serving traditional Czech dishes in a large food hall with live music,

dancing, and beer always being passed around on trays. Crème de la Crème is an amazing gelato shop we visited daily. They have at least 40 flavors, but I never made it past the Lilikoi. On our last day we rode the train out of the city to the Karlstejn Castle, hidden within the hills for a hike up, a tour, and sketching along the way. It was a fantastic way to view the countryside and end our trip.

I met so many lovely artists and shop owners during this trip, made new friends, created sketches, and took hundreds of inspirational photos for future art. I came home with a carry-on suitcase full of beautiful art supplies that I've enjoyed experimenting with and incorporating into my palettes. We had so many adventures along the way... I hope you've enjoyed the highlights.

Find Haidyn's art shops and restaurants on Google Maps:
<https://maps.app.goo.gl/KDrWLXrK83ujWBXU8>



Haidyn's sketches



Nice haul!!

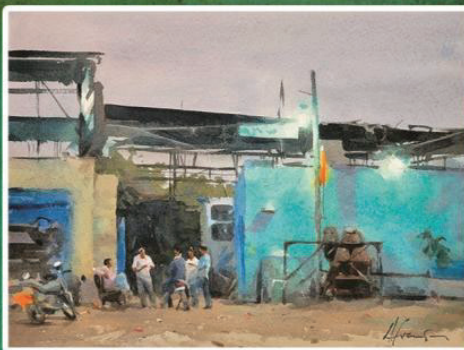
85TH ANNUAL INTERNATIONAL **OPEN** Exhibition

EXHIBITION DATES:
November 8 ~ December 1, 2025

Yuan Ru Art Center
12737 Bel-Red Rd, Suite 100
Bellevue WA 98005

EXHIBITION RECEPTION:
November 8, 2025, 2:00 ~ 4:00 PM

JUROR: Frank Eber, AIS, AWS, NWS

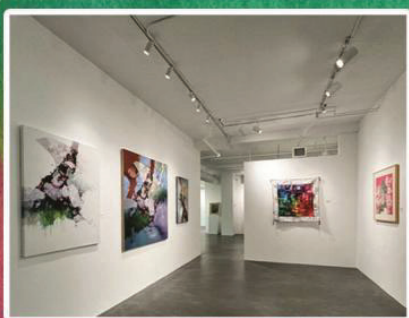


Andy Evansen / Shop Talk



r. mike nichols / Almost Midnight

Rick Anderson / Take the Long Way Home



TERRACOTTA WHERE ARTISTS GROW

Premier Online Art Education led by World Renowned Artists and Educators

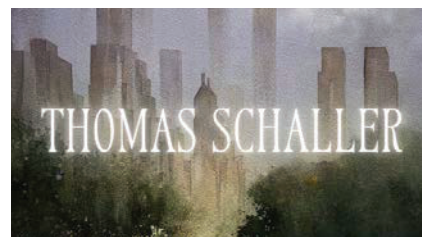
World Class Mentorship from World Class Artists!



Fine Art Mentorship



Creative Momentum in Watercolor



Fine Art Mentorship



Aquabond in Watercolor



Advancing Your Artistic Language

Terracotta specializes in immersive online art education taught by the world's top artists and educators. [Click here](#) to explore our Video Courses, Workshops, & Programs.

[Terracotta.art](#) / [Hello@Terracotta.art](mailto>Hello@Terracotta.art) / 425-200-4089



NORTHWEST WATERCOLOR SOCIETY

Focal Points

BI-WEEKLY NWWS NEWS IN YOUR INBOX

**VALUE AT THE TOP: TIMELY
NEWS AND EVENTS.**



**BONUS VALUE AT THE
BOTTOM. RANDOM. USEFUL.
CHANGING. INSTRUCTIVE.
EDITOR'S CHOICE. TO READ.
TO WATCH. TO LOOK
FORWARD TO.**

**BECOME A KNOWER.
BECOME A SCROLLER!**



NORTHWEST WATERCOLOR SOCIETY

WORKSHOPS International

OUR NEXT INSTRUCTOR:
Pablo Ruben!

<https://pablорuben.com/en>

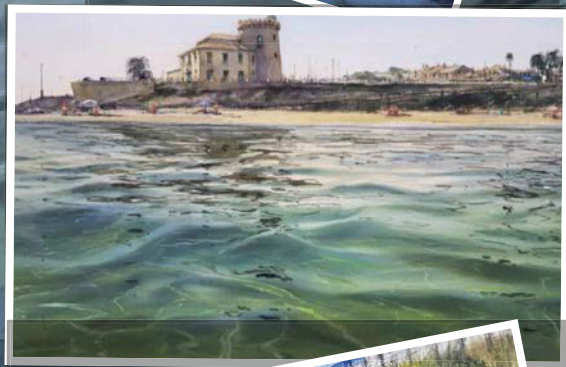
November 8, 2025

10 am ~ 1 pm Pacific

Fee: *only* \$50.00

To register please

[CLICK HERE](#)



2026 Call For Entries

WATERWORKS Online

NWWS Annual Online Membership Exhibition: 4/25/26 ~ 6/30/26

ENTRY DEADLINE: 1/28/26



2025 1st PLACE ~ *Breakfast with Maria* by Lana Privitera



2025 2nd PLACE ~ *Amazing Grace* by Dana Thompson



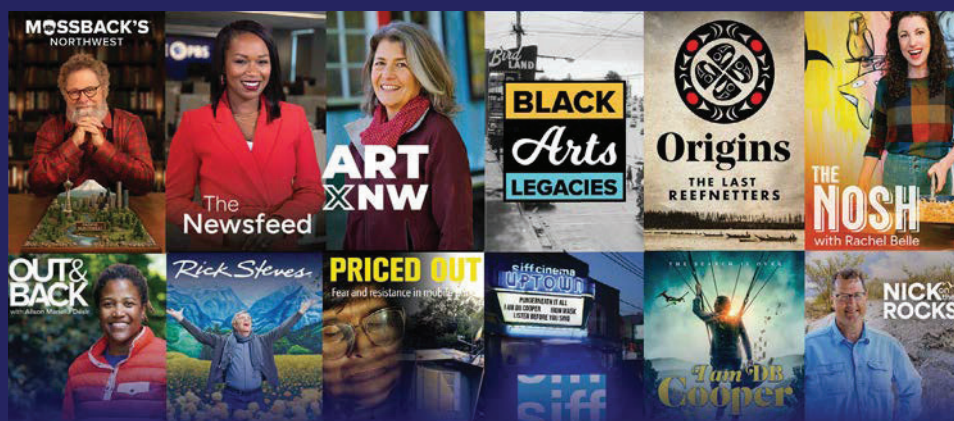
2025 3rd PLACE ~ *Bolt Creek Stump* by Suze Woolf



NWWS is proud to welcome our
2026 Waterworks Exhibition
juror and workshop instructor...

Michael Solovyev
CSPWC, IWS, NWS, NEWS

Programs with a PNW point of view.
Available to stream anytime, anywhere.



CASCADE  PBS

FREE DOWNLOAD: [CASCADEPBS.ORG/APPS](https://cascadepbs.org/apps)

Roku   Google TV iOS android  SAMSUNG

The "Nick on the Rocks" name is a registered trademark of and is used with permission of Central Washington University.

Hot Press
Gallery

Autumn theme: Landscapes

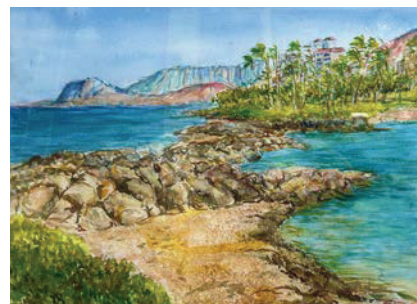
A quarterly showcase for NWWs members



Song of the Meadows
Stella Canfield



Parking
Gayle McDaniel



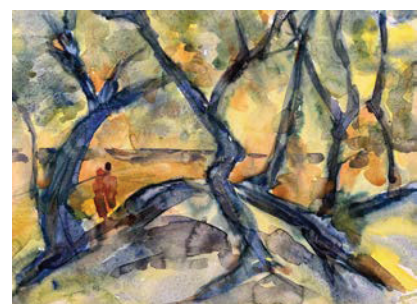
Ko Olina Oahu
Linda Sewerker



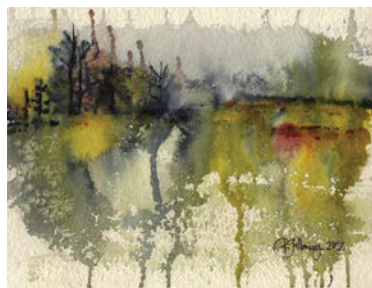
To Maui with Love
Gloria Carmignani Breslin



Cirrus & Sunset
Molly Murrah



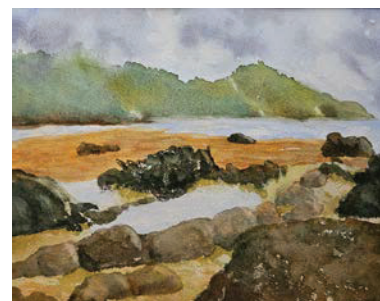
Shoreline Trees
Rochelle Weidner



Already Gone
Rae Galloway



Nambe Badlands New Mexico
Roxy Podlogar



Ancient Weir Fish Trap - Scotland
Sandra Woods



**East Temple Canyon
Meditation Moment
- Zion National Park**
Karen Greenstreet



Sunlit Pathway
Karen Robinette



Mt. Angeles Olympic National Park
Suze Woolf

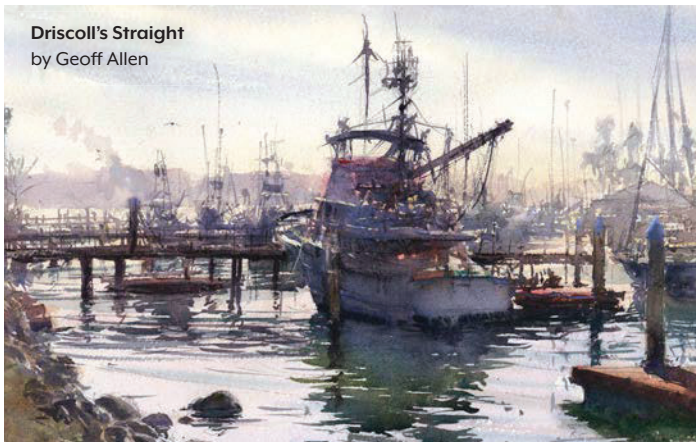
Email your **still life** entries to newsletter@nwws.org by December 1 for the winter issue.



Watercolor *artist* Never Miss an Issue!

Take your watercolor painting to the next level with an annual subscription to *Watercolor Artist* magazine, the definitive source of inspiration, instruction and creative painting ideas for artists working in water-based media.

Driscoll's Straight
by Geoff Allen



SUBSCRIBE NOW AT ArtistsNetwork.com/Subscribe

HOLBEIN

Purveyors of world class artist color, tools and accessories, Holbein materials are second to none and manufactured in Japan to exceed the highest industry standards.



FOLLOW US ON



SCAN ME

www.holbeinartistmaterials.com



FASO

The Art Marketing Platform
for Visual Artists



Special Offer for
Northwest Watercolor Society

Join FASO Today:

- Receive a 60 day FREE Trial
- Full Access to our Marketing calendar, videos, resources and art community.
- \$200 in BoldBrush Ad credits to help launch your site.
- Free Customer Support

www.faso.com



ROSEMARY & CO

40 years of *quality handmade* artists' brushes

Try our
Red Dot
Collection

With all the qualities
of natural hair but
100% synthetic and
vegan-friendly. Perfect
for watercolours.



For more information:

Visit rosemaryandco.com

email enquiries@rosemaryandco.com

or join us on Facebook: 'The Official Rosemary & Co FB Group'.



Painting in the Steam Plant

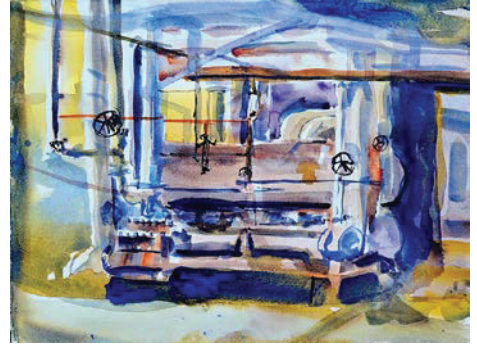
Plein Air Show to Come: *Paintings of the Steam Plant* *in the Steam Plant*

by Suze Woolf

NWWS' plein air group has been busy—by the time this article appears, we will have been out painting almost 20 times, alternating between natural landscapes and urban grit.

And speaking of urban grit, one location we have enjoyed twice each season for the last several years has been Seattle's Georgetown Steam Plant ([virtual tour here](#)). This National Historic venue powered south Seattle trolleys in its heyday. It presents the artist with a huge array of spaces, giant machinery, art deco gauges, and more. We have our second date to paint there this year on the morning of October 22.

And this year, in addition to getting to paint there twice, we'll have the opportunity to show our results at their **December 13th monthly open house (10:00 a.m. – 2:00 p.m.)**. Casual, unjuried, unframed plein air studies will hang from clotheslines, or even more aptly, magnets on the machinery. **C'mon out and see us there!**



Maggie Johnson



Roger Whitlock



Susan Hernday



Suzanne Shaw

MAKE SURE YOU EARN AN ~~NW~~ "OK"

When you complete any form for a credit card or PayPal payment to NWS, please make sure you've filled in every bit of information on all forms and double check your work. Credit card forms and NWS forms are not the same.



M. GRAHAM & CO.[®]

Artwork: Mark Mehaffey

WATERCOLOR
PAINTINGS LOOK BETTER
with M. GRAHAM COLOR

Made with Honey for Richer
Color and Prevents Hardening

www.mgraham.com

HANDCRAFTED
IN THE USA

MADE WITH
NATURAL
Honey
MORTIMER

Butterflies and Brushes: The Art of Field Journaling in Mexico

With Marjorie Leggitt, Artist and Instructor
February 1 - 8, 2026

Demos and instruction provide the foundation to:

LEARN: Quick sketching techniques, color mixing "on the go", watercolor layering techniques, 3 value compositions and linear perspective without tools!

PRACTICE: Sketching "in motion", "stream of consciousness" page design, daily lessons that build from simple to complex.

IMPROVE: Practice time, one-on-one guidance, group critiques.

COME AWAY with a toolbox of new skills and an illustrated diary of your Valle de Bravo experience!



Alongside expert art instruction, enjoy unforgettable experiences:

- Witness millions of monarch butterflies in their winter sanctuary
- Farm-to-table lunch at a local ranch
- Hands-on Mexican cooking class
- Boutique hotel accommodations
- Visits to world-class museums

\$3,375 Shared Room*

\$3,875 Private Room

*When registering with another participant

For more information or to register CONTACT
TRACY KAYE at
linesandlatitude@gmail.com

Hot Press SUBMISSION GUIDELINES

Hot Press is published quarterly and welcomes your submissions celebrating all things watermedia. The editor decides which articles will be published, in what issue, and may edit your content for clarity and space considerations.

TYPES OF SUBMISSIONS:

- 1. NEWS AND ANNOUNCEMENTS:** Published at no cost to members. **Maximum Limit 50 words.** Announcements are accepted from recent events. Submit text in a **Word** document. Accompanying images must be submitted separately, not embedded in articles. Image requirements: **300 dpi, JPEG** format, clearly labeled, and included in the same email.
- 2. DISPLAY ADS:** Accepted as quarter page or half page (either horizontal or vertical). Ad specs: **300 dpi, PDF** format, and sized at 100% scale. Must be **print-ready** with **working links included** for all **websites** and **email addresses**. Ads are not proofed or edited by NWWWS. **NOTE:** Paid ad rates are lower for NWWWS members.
- 3. COPYRIGHT ADHERENCE:** No articles or images copied from websites are allowed **without written permission**.

NEWS AND ANNOUNCEMENT EXAMPLES:

Personal achievements such as: awards from juried exhibitions, inclusion in publications, magazines articles, books, special recognition or honors, art educational opportunities, signature membership, and more.

HOW TO SUBMIT NEWS AND ANNOUNCEMENTS:

Send Word documents and JPEG images by email to:
newsletter@nwws.org.

FEATURE AND EDUCATIONAL ARTICLES:

Are you a writer and would like to contribute? Please contact the *Hot Press* editor prior to submission.

DISPLAY AD EXAMPLES INCLUDE:

Art educational and travel opportunities, in-person or online workshops and classes, advertising of member or non-member manufactured professional grade art materials, "Calls for Entries" for juried or non-juried exhibitions, and more. Only content relevant to our art-loving readers is accepted.

HOW TO SUBMIT PAID DISPLAY ADS:

Display ads are only accepted online at nwws.org/newsletter through the submittal form found by clicking: "Submit a Display Ad." Noncompliant ads cannot be published. See ad sizes on right.

**DISPLAY
AD
SIZES**

**VERTICAL
HALF PAGE**
3⁵/₈"W x 10"H

**QUARTER
PAGE**
3⁵/₈"W x 4⁷/₈"H

**HORIZONTAL
HALF PAGE**
7¹/₂"W x 4⁷/₈"H

HOT PRESS SUBMISSION DUE DATES

WINTER DEADLINE
DECEMBER 1
January/February/March Issue

SPRING DEADLINE
MARCH 1
April/May/June Issue

SUMMER DEADLINE
JUNE 1
July/August/September Issue

AUTUMN DEADLINE
SEPTEMBER 1
October/November/December Issue

SEND QUESTIONS TO:
D'Arcy Heiber
Hot Press Editor
Newsletter@nwws.org