

Each brush stroke is a decision.
 —Robert Motherwell

As I study the depictive process, my sketchbook notations are key in the next process. I investigate the notion of 'knowing it by heart'. I have drawn it thoroughly, felt it and internalized the (landscape) music. If the depictive process is meaningful and memorable—if 'I know it by heart'—then I can improvise to an evocative process, creating new notes and melodies that are then felt a response, a rhythm, a vibration, a motive of what I see and feel.

I begin with the design elements: shape, line, texture, edges, color, value, space and question which tools motivate me to the next step. Is the media describing the evocative notions I wish to describe.

Newly discovered design notions aid me in the first steps of 'crossing over' to the evocative; mark-making about a place and time, aspects purely felt on a given subject.

I delve further into design notions and their relationships.

Evaluate, stand back and begin the next steps.

Design Elements are the tools of the artist:

- Shape: pattern, form, mass, object, subject matter
- Value: light and dark, tone and tint
- Space: the illusion of three-dimensional depth and two-dimensional flatness
- Edges: blurred and sharp, lost and found
- Color: hue, intensity, temperature
- Texture: surface variation
- Line: mark making, drawing

Design principles are the organizing aesthetic ideas that guide your use of elements in a work of art.

**ASSIGNMENT FOR
 CRITIQUE SUBMISSIONS**



Assignment: Choose one of these (2) landscape photographs. Create painting studies, with ideas of design elements involved.

Focus and direction of the elements may guide you. Which elements did you focus?

**NOTE: COMPLETE ASSIGNMENT ON ONE PIECE OF PAPER, PHOTOGRAPH, AND SEND.
 USE THE ABOVE EXAMPLE AS A GUIDE. SEND TO AZR@NWWWS.ORG**

NWWWS 2023

Anita H. Lehmann
 1625 11th Ave West
 Seattle, WA 98119
 anita@ahldraws.com

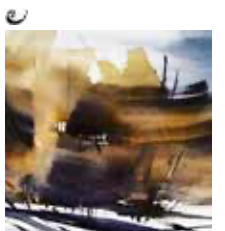
206 841 3258
 ahldraws.com





Anita H. Lehmann
1625 11th Ave West
Seattle, WA 98119
anita@ahldraws.com

206 841 3258
ahldraws.com





Anita H. Lehmann
1625 11th Ave West
Seattle, WA 98119
anita@ahldraws.com

206 841 3258
ahldraws.com

